

English

HM-JACK *arc*

FECAL OCCULT BLOOD TEST ANALYZER

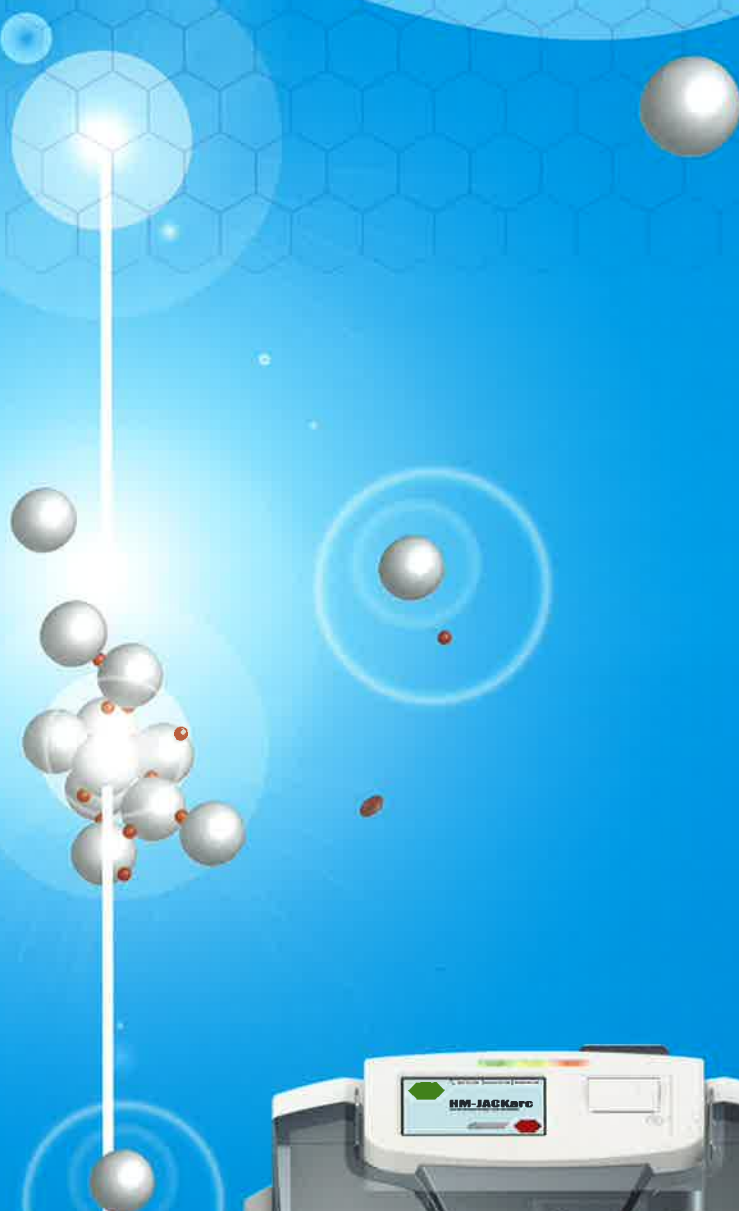
Kyowa Medex's New Fecal Occult Blood Test Analyzer



Analyzer

Reagent

Collection picker



Kyowa Medex Co., Ltd.

New fecal occult blood test system of Kyowa Medex

Fully new model

Our concept is
Integration of analyzer and reagent!

Reagent



Harmony of triangle !

Analyzer



Collection picker



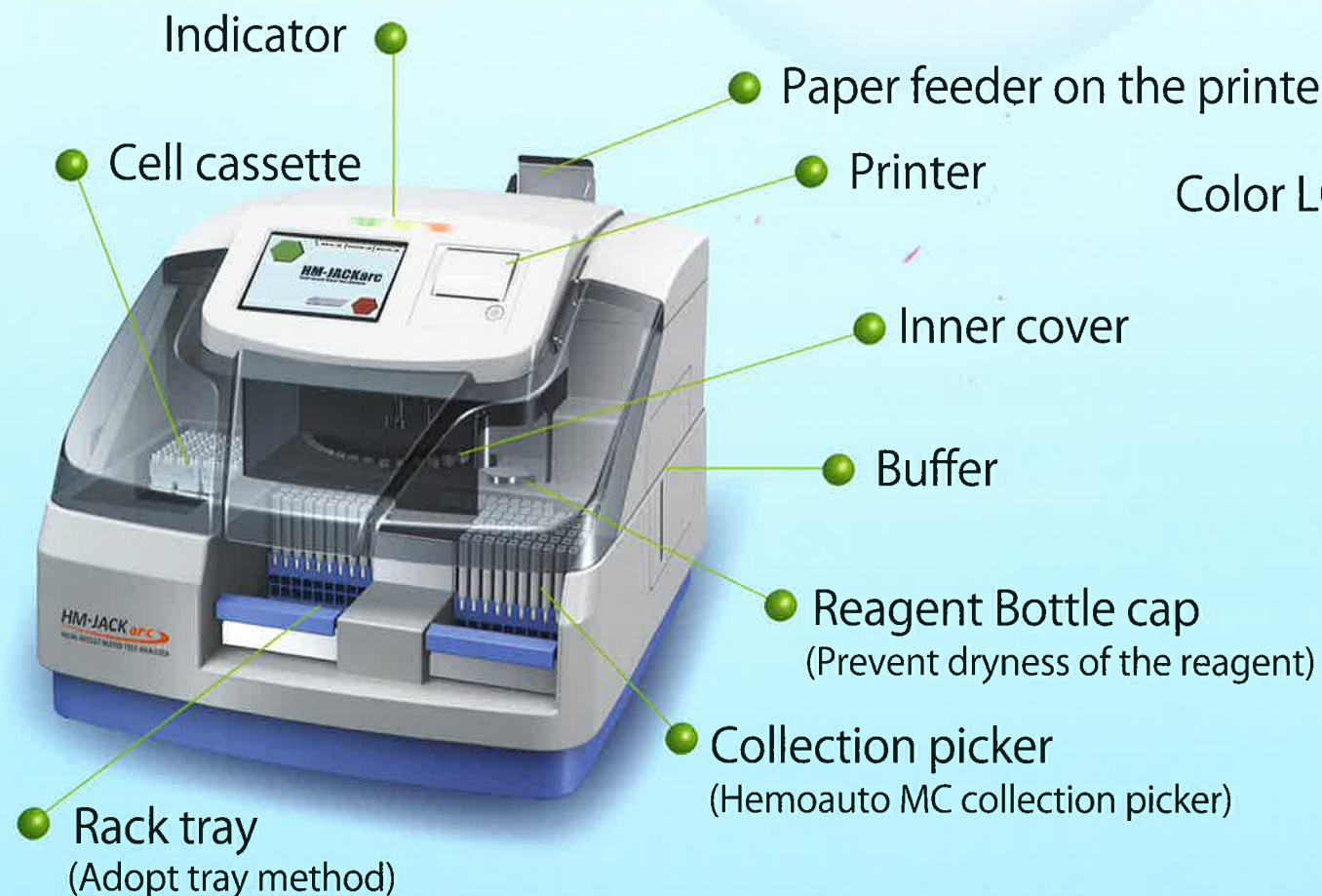
Simple operability, and the balance to
inspire 100% of High performance

HM-JACK *arc*

Stylish shape and simplified optical screen



Tricolor effects shows status of the analyzer

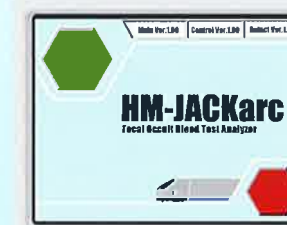


Color LCD touchscreen

Dust box
Triple capacity

Outer cover

Start screen



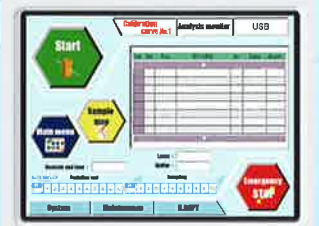
Main screen



Measurement screen



Monitor



Cell set



Simple method to set up reagent/specimen and then press START button.

通常測定



1. Set up reagent



2. Set up cell



3. Set up specimen



4. Select START



5. Verify the result of a measurement

Evolution to HM-JACKarc

HM-JACKarc
FECAL OCCULT BLOOD TEST ANALYZER

Analyzer : HM-JACKarc

It has novel externals that completely change the image.

Feature:

- Newly adopt the rack system to achieve superior operability and increase of throughput speed
- Adopt full color indicator which enables to visually monitor operating conditions by patterns of emission
- Improvement of operability with innovative software

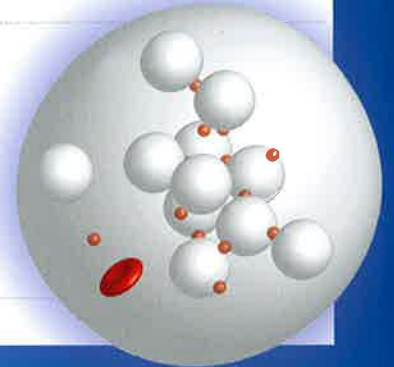


Reagent : Extel "HemoAuto HS"

Realize high sensitivity with improvement of latex solution

Feature:

- Significant improvement of repeatability at cut off value
- Significant improvement of repeatability at lower level
- Reagent concentration to maximize the feature of the integrating sphere nephelometer



Collection picker : HemoAutoMC collection picker

Newly developed multi-functional collection picker(patent pending)

Feature:

- Adjust the volume of collection with 2 steps scrubbing method
- Adopt the hexagonal hole which enables to maintain stability of feces/improvement of solubility
- Excessive feces to be accumulated in single direction simply enables to detect presence of feces in collection
- Adopt multifunctional and integrated seal



Optimal collection picker for HM-JACKarc (HemoAuto MC)

Simple and sophisticated structure

- Newly developed 2 steps rotating function to scrub
- Hexagonal hole enables accurate collection of the feces.
- Newly developed function of feces collection enables to detect presence of feces. *1

Improvement of operability with innovation of multi-functional sticker

- Able to verify the feces picker to be opened with cutoff sticker
- Able to verify collection of feces with the sight glass of collecting feces
- Prevent contamination of piercing portion(with Over-sticker)

W20 type

* 1 This simple function is unable to guarantee detection of any presence of feces.(Unable to detect if watery state)

Confirmable to break a sticker
Sticker to open



Turn

Tear line

Lot. ABC123

Expiry 2010

Sampling bottle

Don't peel this part

ABC123

Expiry 2010.10

Sampling bottle

Don't peel this part

ABC123

Expiry 2010.10

Sampling bottle

Don't peel this part

ABC123

Expiry 2010.10

Sampling bottle

Don't peel this part

ABC123

Expiry 2010.10

Sampling bottle

Don't peel this part

ABC123

Expiry 2010.10

Sampling bottle

Don't peel this part

ABC123

Expiry 2010.10

Sampling bottle

Don't peel this part

ABC123

Expiry 2010.10

Sampling bottle

Don't peel this part

ABC123

Expiry 2010.10

Sampling bottle

Don't peel this part

ABC123

Expiry 2010.10

Sampling bottle

Don't peel this part

ABC123

Expiry 2010.10

Sampling bottle

Don't peel this part

ABC123

Expiry 2010.10

Sampling bottle

Don't peel this part

ABC123

Expiry 2010.10

Sampling bottle

Don't peel this part

ABC123

Expiry 2010.10

Sampling bottle

Don't peel this part

ABC123

Expiry 2010.10

Sampling bottle

Don't peel this part

ABC123

Expiry 2010.10

Sampling bottle

Don't peel this part

ABC123

Expiry 2010.10

Sampling bottle

Don't peel this part

ABC123

Expiry 2010.10

Sampling bottle

Don't peel this part

ABC123

Expiry 2010.10

Sampling bottle

Don't peel this part

ABC123

Expiry 2010.10

Sampling bottle

Don't peel this part

ABC123

Expiry 2010.10

Sampling bottle

Don't peel this part

ABC123

Expiry 2010.10

Sampling bottle

Don't peel this part

ABC123

Expiry 2010.10

Sampling bottle

Don't peel this part

ABC123

Expiry 2010.10

Sampling bottle

Don't peel this part

ABC123

Expiry 2010.10

Sampling bottle

Don't peel this part

ABC123

Expiry 2010.10

Sampling bottle

Don't peel this part

ABC123

Expiry 2010.10

Sampling bottle

Don't peel this part

ABC123

Expiry 2010.10

Sampling bottle

Don't peel this part

ABC123

Expiry 2010.10

Sampling bottle

Don't peel this part

ABC123

Expiry 2010.10

Sampling bottle

Don't peel this part

ABC123

Expiry 2010.10

Sampling bottle

Don't peel this part

ABC123

Expiry 2010.10

Sampling bottle

Don't peel this part

ABC123

Expiry 2010.10

Sampling bottle

Don't peel this part

ABC123

Expiry 2010.10

Sampling bottle

Don't peel this part

ABC123

Expiry 2010.10

Sampling bottle

Don't peel this part

ABC123

Expiry 2010.10

Sampling bottle

Don't peel this part

ABC123

Expiry 2010.10

Sampling bottle

Don't peel this part

ABC123

Expiry 2010.10

Sampling bottle

Don't peel this part

ABC123

Expiry 2010.10

Sampling bottle

Don't peel this part

ABC123

Expiry 2010.10

Sampling bottle

Don't peel this part

ABC123

Expiry 2010.10

Sampling bottle

Don't peel this part

ABC123

Expiry 2010.10

Sampling bottle

Don't peel this part

ABC123

Expiry 2010.10

Sampling bottle

Don't peel this part

ABC123

Expiry 2010.10

Sampling bottle

Don't peel this part

ABC123

Expiry 2010.10

Sampling bottle

Don't peel this part

ABC123

Expiry 2010.10

Sampling bottle

Don't peel this part

ABC123

Expiry 2010.10

Sampling bottle

Don't peel this part

ABC123

Expiry 2010.10

Sampling bottle

Don't peel this part

ABC123

Expiry 2010.10

Sampling bottle

Don't peel this part

ABC123

Expiry 2010.10

Sampling bottle

Don't peel this part

ABC123

Expiry 2010.10

Sampling bottle

Don't peel this part

ABC123

Expiry 2010.10

Sampling bottle

Don't peel this part

ABC123

Expiry 2010.10

Sampling bottle

Don't peel this part

ABC123

Expiry 2010.10

Sampling bottle

Don't peel this part

ABC123

Expiry 2010.10

Sampling bottle

Don't peel this part

ABC123

Expiry 2010.10

Sampling bottle

Don't peel this part

ABC123

Expiry 2010.10

Sampling bottle

Don't peel this part

ABC123

Expiry 2010.10

Sampling bottle

Don't peel this part

ABC123

Expiry 2010.10

Sampling bottle

Don't peel this part

ABC123

Expiry 2010.10

Sampling bottle

Don't peel this part

ABC123

Expiry 2010.10

Sampling bottle

Don't peel this part

ABC123

Expiry 2010.10

Sampling bottle

Don't peel this part

ABC123

Expiry 2010.10

Sampling bottle

Don't peel this part

ABC123

Expiry 2010.10

Sampling bottle

Don't peel this part

ABC123

Expiry 2010.10

Sampling bottle

Don't peel this part

ABC123

Expiry 2010.10

Sampling bottle

Don't peel this part

ABC123

Expiry 2010.10

Sampling bottle

Don't peel this part

ABC123

Expiry 2010.10

Sampling bottle

Don't peel this part

ABC123

Expiry 2010.10

Sampling bottle

Don't peel this part

ABC123

Expiry 2010.10

Sampling bottle

Don't peel this part

ABC123

Expiry 2010.10

Sampling bottle

Don't peel this part

ABC123

Expiry 2010.10

Sampling bottle

Don't peel this part

ABC123

Expiry 2010.10

Sampling bottle

Don't peel this part

ABC123

Reference data of highly sensitive latex

Significant improvement with accuracy at lower concentration

An example to install the high-sensitive parameter with application of sensitized latex

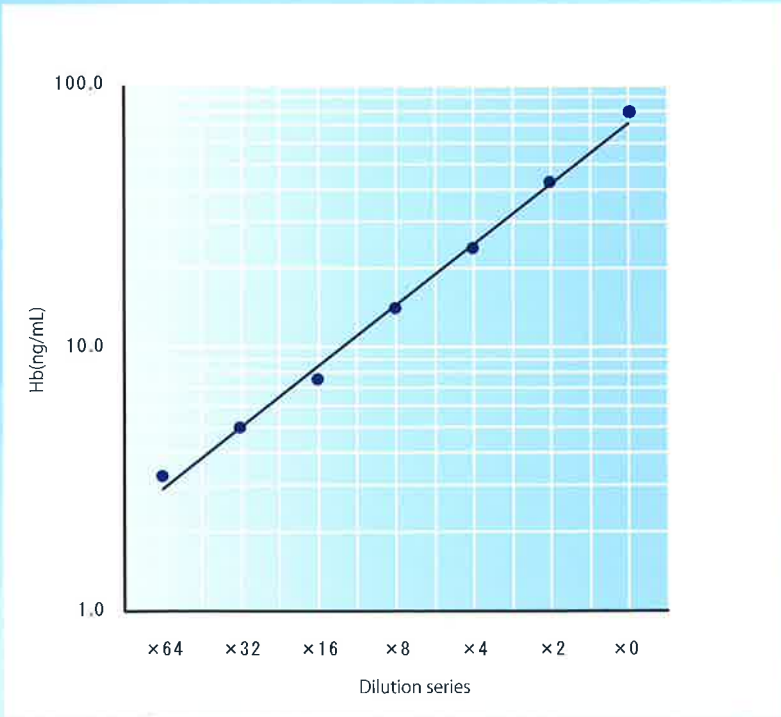
Repeatability

No.	Sample1		Sample2		Sample3		Sample4	
	ng/mL	ΔIST	ng/mL	ΔIST	ng/mL	ΔIST	ng/mL	ΔIST
1	15.2	370	27.3	817	25.5	739	389.2	29347
2	15.8	389	27.9	842	26.0	760	406.5	30586
3	15.5	379	27.0	801	25.0	718	407.7	30455
4	15.3	373	27.7	831	25.3	729	416.9	31317
5	15.5	380	27.5	824	24.7	704	415.3	31203
6	15.4	377	27.7	831	25.5	737	435.2	32586
7	15.0	366	26.9	796	25.2	727	416.5	31286
8	14.0	334	26.3	774	24.4	695	392.1	29559
9	15.3	373	27.6	829	25.4	735	390.1	29411
10	15.5	378	27.4	818	25.5	740	422.7	31718
n	10	10	10	10	10	10	10	10
Mean	15.3	372	27.3	816	25.3	728	4089	30747
SD	0.46	13.96	0.45	19.37	0.43	17.85	14.46	1021
CV(%)	3.0%	3.8%	1.7%	2.4%	1.7%	2.5%	3.5%	3.3%

An excellent result was obtained as a result of examining simultaneous reproducibility with the sample that diluted the control sample.

*Referent cutoff value is 30ng/mL.

Linearity(Low)



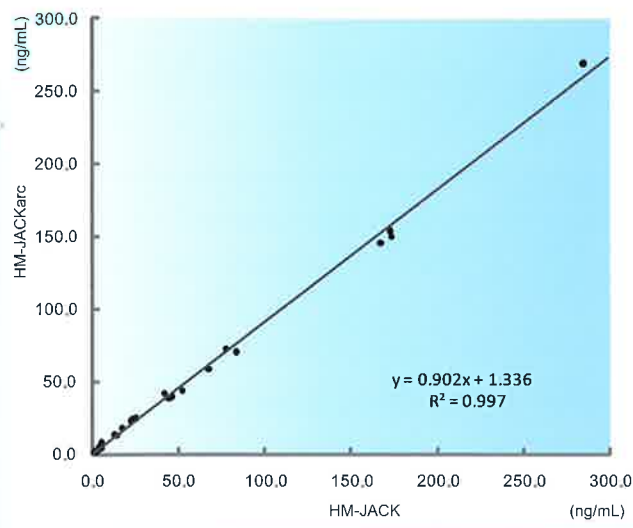
The dilution series of seven stages was made and measured based on the water soluble sample in the vicinity of 80ng/mL.

*Referent cutoff value is 30ng/mL.



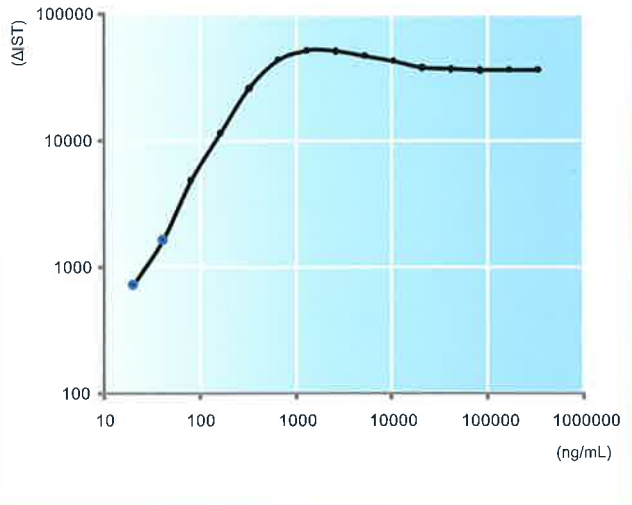
Analysis result shown above is a reference only.

Correlation



An excellent correlation was obtained with of HM-JACK.

Prozone



The Prozone was not detected up to 1000ng/mL.

Series model



Specifications

Analysis method	Latex agglutination method
Principles of measurement	Integrated spherical nephelometry (turbidity) determination
Through put	200samples/hour
Items of simultaneous measurement	One item
Volume of test sample	10 ~ 60μL
Volume of reagent	Latex:20 ~ 300μL Buffer :20 ~ 300μL
Total volume	300μL
Sample table	80test sample (Rack method)
Test sample tube	Exclusive feces pickers (HemoAuto MC)
Pipette for test sample	Direct insertion into feces pickers
Pipette for reagents	Pressed off nozzle system with buffer solution
Reaction table	Capacity for reaction cells placed:40cells
Reaction time	4.5minutes
Supply of reaction cells	Automatic supply and discharge
Total number of reaction cells	80cells (two cassettes with 40reaction cells each)
Reaction temperature	Room temperature
Light source	Halogen lamp 5V 9W
Detector	Silicon photodiode
Calibration of concentration	Seven-point calibration curve.
Calibration curve	Master-curve system, two-point correction
Monitor	Color Liquid-crystal monitor (Touch panel)
Printer	32-figures thermal printer
Power supply	AC100V \pm 10V or AC220V \pm 10V
Power consumption	300VA
Sizes	H500×W600×D610
Weight	56kg
External output	RS232C

There is a case to change specification without a notice for improvement.

Kyowa Medex Co.,Ltd.

Head Office
Harumi Triton Square X-4F.1-8-10,Harumi,Chuo-ku,Tokyo
104-6004,Japan
TEL. +813-6219-7605
FAX. +813-6219-7614

Fuji Plant
600-1 Minamiishiki,Nagaizumi-cho, Sunto-gun,Shizuoka-ken,
411-0932,Japan
TEL. +81559-88-6000
FAX. +81559-88-6005

